



# Operating Manual

## Translation of original instructions

EN

**D4A9867XA**

vers. 3.0



(c) 2025 SILCA S.p.A. - Vittorio Veneto

**IT**

La stesura di questo manuale è stata curata da SILCA S.p.A.

Tutti i diritti sono riservati. Nessuna parte della pubblicazione può essere riprodotta o di usa con un mezzo qualsiasi (fotocopie, micro Im o altro) senza il consenso di SILCA S.p.A.  
Edizione: Luglio 2025

Stampato a Vittorio Veneto

Da SILCA S.p.A. - Via Podgora, 20 (Z.I.) - 31029 VITTORIO VENETO (TV) - Italia

(c) 2025 SILCA S.p.A. - Vittorio Veneto

**EN**

This manual is written by SILCA S.p.A.

All rights reserved. No part of this publication may be reproduced or used in any form or by any means (photocopying, micro Im or other) without the written permission of SILCA S.p.A.

Edition: July 2025

Printed in Vittorio Veneto

by SILCA S.p.A. - Via Podgora, 20 (Z.I.) - 31029 VITTORIO VENETO (TV) - Italia

(c) 2025 SILCA S.p.A. - Vittorio Veneto

**DE**

Dieses Handbuch wurde von SILCA S.p.A. herausgegeben.

Alle Rechte vorbehalten. Jede Vervielfältigung durch Fotokopien, Mikro Ime, usw. bedarf der vorherigen Genehmigung von SILCA S.p.A.  
Ausgabe: Juli 2025

Gedruckt in Vittorio Veneto

von SILCA S.p.A. - Via Podgora, 20 (Z.I.) - 31029 VITTORIO VENETO (TV) - Italia

(c) 2025 SILCA S.p.A. - Vittorio Veneto

**FR**

La rédaction de ce manuel a été assurée par SILCA S.p.A.

Tous les droits sont réservés. Aucune partie de cette publication ne pourra être reproduite ou di usée sur quelque support que ce soit (photocopie, micro Im ou autre) sans l'accord de SILCA S.p.A..

Edition: Juillet 2025

Imprimé à Vittorio Veneto

par SILCA S.p.A. - Via Podgora, 20 (Z.I.) - 31029 VITTORIO VENETO (TV) - Italia

(c) 2025 SILCA S.p.A. - Vittorio Veneto

**ES**

Este manual ha sido redactado por SILCA S.p.A.

Reservados todos los derechos. Ninguna parte de la publicación puede ser reproducida o difundida con cualquier medio (fotocopias, micro Im u otro) sin el permiso escrito de SILCA S.p.A.

Edition: Julio 2025

Impreso en Vittorio Veneto

de SILCA S.p.A. - Via Podgora, 20 (Z.I.) - 31029 VITTORIO VENETO (TV) - Italia

(c) 2025 SILCA S.p.A. - Vittorio Veneto

**PT**

Este manual foi escrito por SILCA S.p.A.

Todos os direitos reservados. Nenhuma parte desta publicação pode ser reproduzida ou usada em qualquer forma ou método (fotocopia, micro Ime ou outros) sem a permissão escrita de SILCA S.p.A.

Edição: Julho 2025

Impressa em Vittorio Veneto

de SILCA S.p.A. - Via Podgora, 20 (Z.I.) - 31029 VITTORIO VENETO (TV) - Italia

(c) 2025 SILCA S.p.A. - Vittorio Veneto

**NL**

Deze handleiding werd opgesteld door de rma SILCA S.p.A.

Alle rechten zijn voorbehouden. Geen enkel deel van deze publicatie mag vermenigvuldigd of verspreid worden, door gelijk welk hulpmiddel (fotokopieën, micro lms of andere hulpmiddelen), zonder toestemming van de rma SILCA S.p.A.

Editie: Juli 2025

Gedruckt te Vittorio Veneto

door SILCA S.p.A. - Via Podgora, 20 (Z.I.) - 31029 VITTORIO VENETO (TV) - Italia

# INDEX

WARNINGS.....	1
BATTERY REPLACEMENT.....	3
TECHNICAL DATA.....	4
MODEL FEATURES.....	4
LED GUIDE AND PROCEDURE ICONS.....	5
FIXED CODE AND ROLLING CODE STANDARD DUPLICATION PROCEDURE.....	6
ALS PROCEDURE.....	7
RECEIVER MANUAL MEMORIZATION PROCEDURE.....	8
SPECIFIC BFT* MITTO DUPLICATION PROCEDURE.....	9
SPECIFIC AVIDSEN* DUPLICATION PROCEDURE.....	11
SPECIFIC V2* DUPLICATION PROCEDURE .....	13
SPECIFIC HÖRMANN* DUPLICATION PROCEDURE .....	15
SPECIFIC CAME* TOPDXF/R DUPLICATION PROCEDURE .....	16
SPECIFIC DUPLICATION PROCEDURE FAAC*/GENIUS* MASTER .....	18
SOURCE CODE PROCEDURE.....	20
I.AM BT AND APP I.AM PRO .....	21
PROBLEM SOLVING .....	22
DISPOSAL.....	24



## WARNINGS



EN Pay attention  
 IT Prestare attenzione  
 DE Vorsicht  
 FR Faire attention  
 ES Poner atención  
 PT Prestar atenção  
 NL Opgelet



EN Obligation to read the manual  
 IT Obbligo di lettura del manuale d'uso  
 DE Das Handbuch muss gelesen werden  
 FR Il est obligatoire de lire le mode d'emploi  
 ES Es obligatorio leer el manual de uso  
 PT É obrigatório ler o manual de utilização  
 NL Verplicht doorlezen van de handleiding



EN Keep out of the reach of children  
 IT Tenere lontano dalla portata dei bambini  
 DE Außerhalb der Reichweite von Kindern aufbewahren  
 FR Tenir hors de portée des enfants  
 ES Mantener fuera del alcance de los niños  
 PT Manter fora do alcance das crianças  
 NL Buiten bereik van kinderen bewaren

EN Flap removal - IT Rimozione aletta - DE Schaft entfernen - FR Extraction protection - ES Remoción banda - PT Remoção de etiqueta - NL Strip verwijderen



Fig./Abb. 1

Fig./Abb. 2

EN Battery replacement - IT Sostituzione batteria - DE Batterie ersetzen - FR Remplacement pile - ES Sustitución de la batería - PT Substituindo a bateria - NL Batterij vervangen

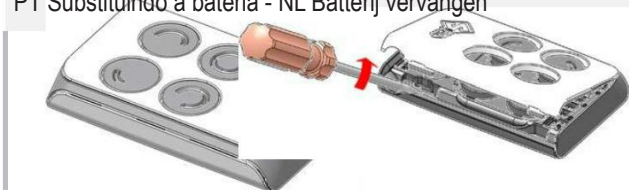


Fig./Abb. 3

Fig./Abb. 4

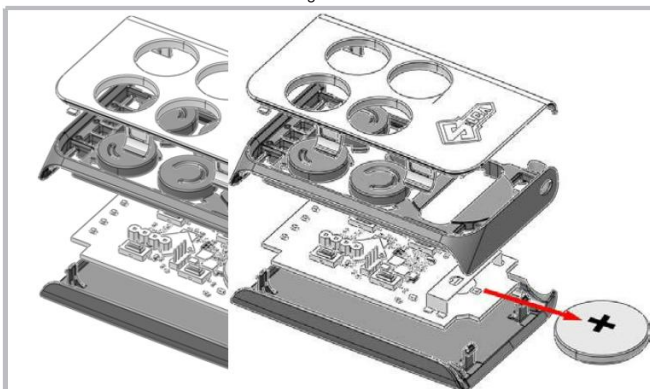


Fig./Abb. 5

Fig./Abb. 6

## BATTERY REPLACEMENT

Use a pointed screwdriver to lift the cover of the i.am remote control (Fig. 4 and (Fig. 5). Insert a 3V CR2032 LITHIUM BATTERY. Check polarity (Fig. 6). Do not throw flat batteries away: dispose of them in the special waste sorting centres (see chapter DISPOSAL on pag 24).

### WARNING



Lithium battery inside.



There is a risk of explosion if incorrect or damaged batteries are used (e.g. if there is oxidation, liquid loss or deformation). Remove battery immediately if exhausted or not in regular use.  
The battery can cause severe or fatal injuries if it is swallowed or placed inside any part of the body.  
Medical attention should be sought immediately if it is suspected the battery has been swallowed or placed inside any part of the body.



Keep out of reach of children.

## TECHNICAL DATA

Product type:	Residential Remote
Buttons (Functions):	4
Operating temperature:	from -10 to +55 °C
Power supply:	DC 3V (Battery CR2032)

## MODEL FEATURES

Model	Frequency	Copy face to face	Copy by Bluetooth	Copy by Easyscan Plus
<b>i.AM 64</b>	433,92 MHz ; 868,3 MHz			
<b>i.AM BT</b>	433,92 MHz ; 868,3MHz ; 2,4GHz (BLE)			
<b>i.AM 128</b>	433,92 MHz ; 868,3 MHz			
<b>i.AM 433</b>	433,92 MHz			

Transmission band	Maximum radio frequency power
433,92 MHz	10 dBm
868,92 MHz	10 dBm
(BLE) 2400 – 2483 MHz	8 dBm

WARNING: The 868.049 MHz - 868.549 MHz transmission band is not available in Australia and must be disabled.

This product complies with the requirements of the international standard EN 62368-1.

# LED GUIDE AND PROCEDURE ICONS

The i.am remote control is equipped with 3 operational LEDs and 1 LED that indicates the battery status. These LEDs guide the operator step-by-step through the various duplication phases; the LEDs with red light on, flashing slowly or rapidly, show the status of the learning, programming and copying phases of the remote control or the receiver.



**Direct learning LED (active with red light)**  
Indicates that the code of the original remote has been copied directly onto the i.am remote and works without having to be memorized in the original receiver.



**LED A (active with red light)**  
Indicates the code of the original remote has been copied onto the i.am remote but, to work correctly, it needs to be memorized in the original receiver. This operation should be performed using the ALS procedure.



**LED M (active with red light)**  
Indicates the code of the original remote control has been copied onto the i.am remote control but, to work correctly, it needs to be memorized in the original receiver using the OEM procedure.

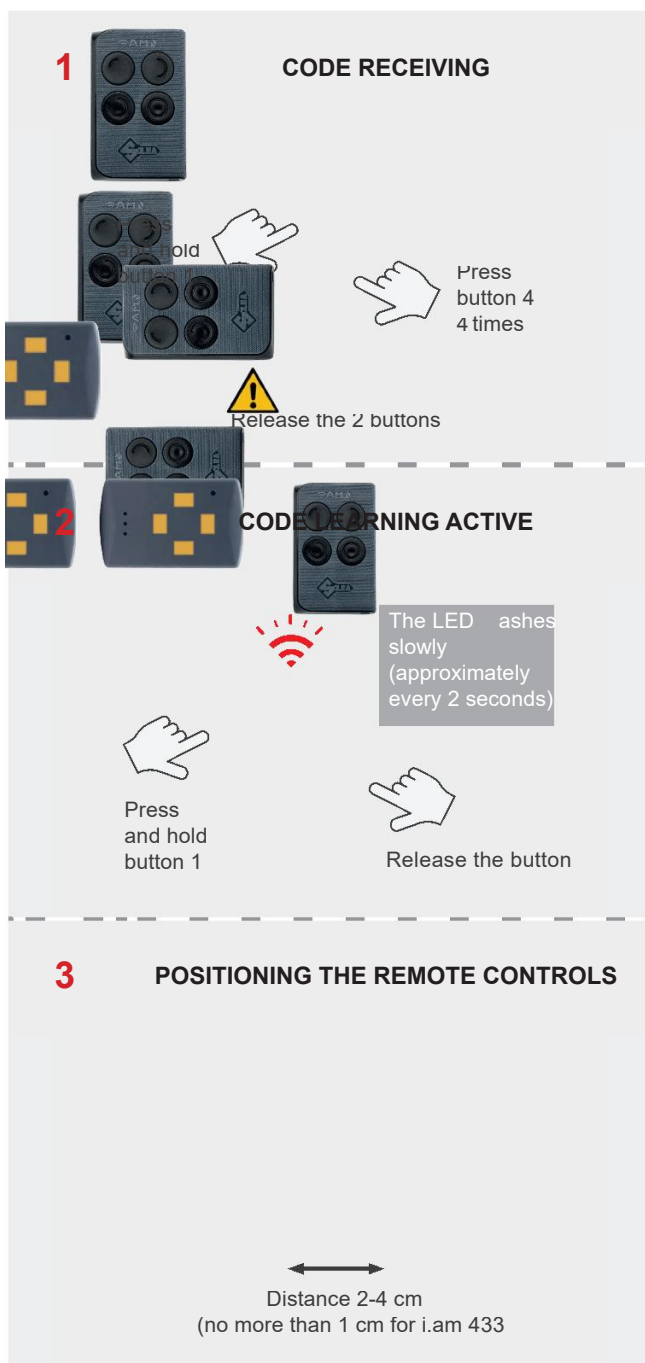


**Battery LED (active with red light)**  
The battery LED lit with red light indicates that the remote control battery should be replaced.






BUTTON POSITIONS		COPY PROCEDURE SYMBOLS	
	1		Direct learning procedure
	2		Receiver self-memorization procedure
	3		Manual receiver memorization
	4		

(\*) This is a trademark of a third party not affiliated nor linked with Silca S.p.A. or the dormakaba Group. Silca S.p.A. and dormakaba Group do not own any intellectual property right nor have been granted any license with regard to such trademark, which is hereby used only to indicate the intended purpose of Silca's products.


## FIXED CODE AND ROLLING CODE STANDARD DUPLICATION PROCEDURE

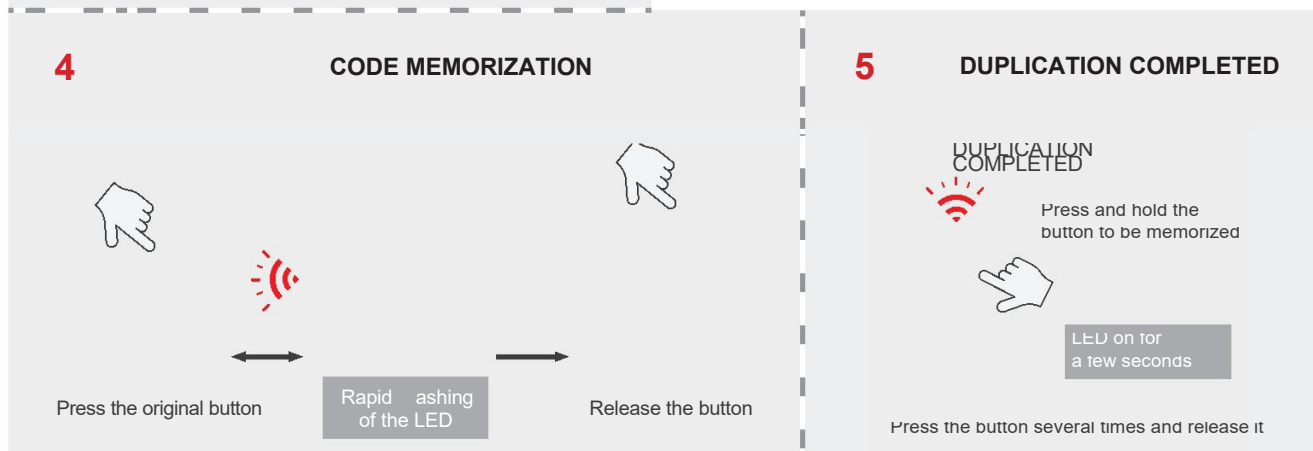


Procedure for duplicating remote controls with standard fixed and rolling codes (compatible with i.am remote control BT, 64, 128, 433 models).

1. Hold down button 1 on i.am remote control and press 4 times button 4. Release the 2 buttons.
2. The  LED starts to flash slowly (approximately every 2 seconds).
3. Position the original remote control in front of i.am remote control at a distance of approximately 2-4 cm (no more than 1 cm for the i.am remote control 433 model).
4. Press the button to be copied on the original remote control: the  LED on i.am remote control starts to flash quickly. Release the button on the original remote control.
5. Press and hold the button you want to use on the i.am remote control. **Check which of the following LEDs lights up for a few seconds:**
  - LED  (direct learning): the copy is complete and the i.am remote control is ready for use. Press the i.am remote control button several times to check operation with the original receiver functions correctly.
  - LED  (auto-memorization of the receiver): see the "ALS Procedure".
  - LED  (manual memory of the receiver): see the "Manual memory of the receiver" procedure.
6. The copy was successful.

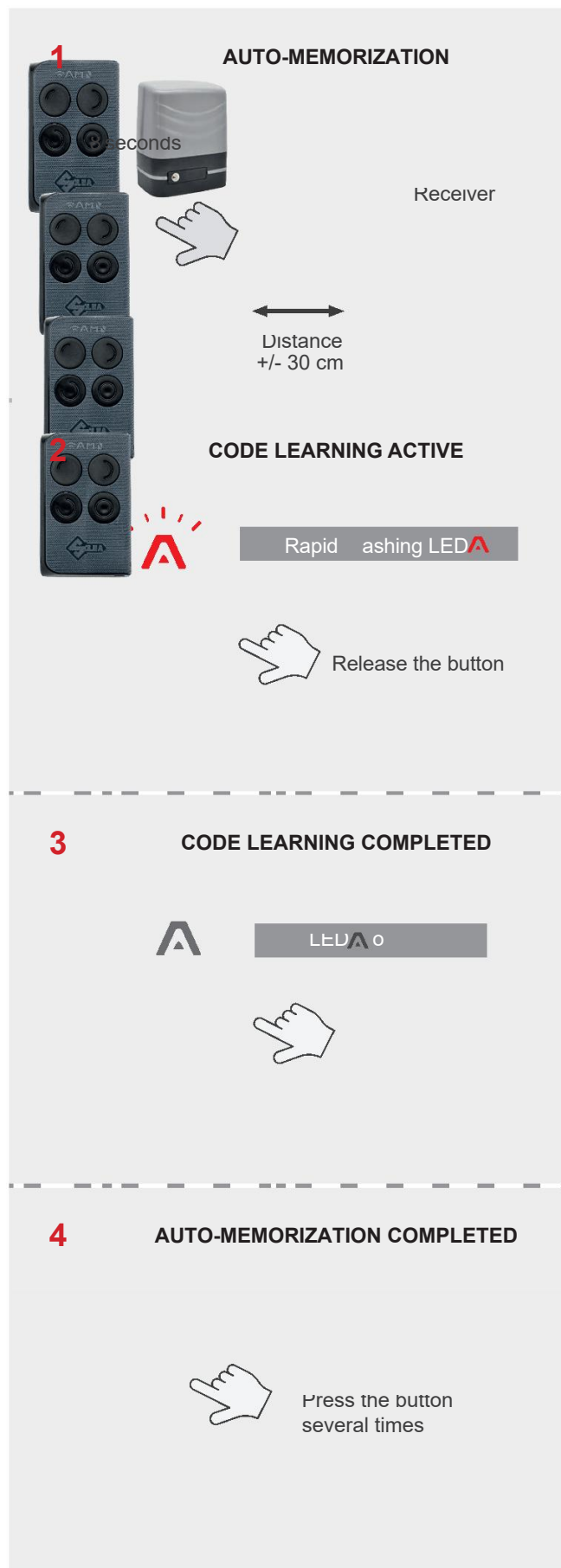
If your original remote control has other buttons with functions that you want to copy, follow the same procedure (steps 1 to 5 for each button).

**ATTENTION:** if in step 2 the  LED continues to flash slowly, the code learning has not been successful. See the section "Problem solving" on page 22.



(\*) This is a trademark of a third party not affiliated nor linked with Silca S.p.A. or the dormakaba Group. Silca S.p.A. and dormakaba Group do not own any intellectual property right nor have been granted any license with regard to such trademark, which is hereby used only to indicate the intended purpose of Silca's products.

## ALS PROCEDURE



### RECEIVER AUTO MEMORIZATION

**Simplified procedure to activate the i.am remote control in the receiver.**

Procedure to follow if at the end of the copy the LED light remains on for a few seconds.

The procedure is valid only if the radio function or memorization is activated, otherwise use the instructions of the original remote control (see procedure "Manual receiver memorization").

Do not use the original remote control before activating the ALS procedure on the i.am remote control.

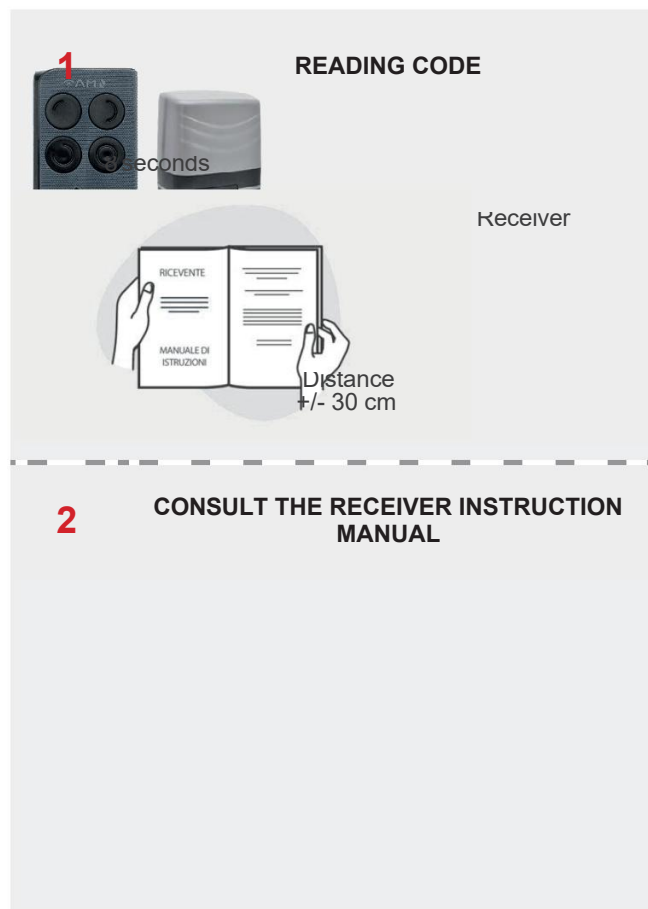
1. Position i.am remote control near the receiver (+/- 30 cm). Hold down the button you wish to memorize for approximately 8 seconds.
2. When the LED starts to flash quickly, release the button.
3. Wait for the LED to turn off.
4. The auto memorization is complete: press the memorized button several times and check the correct operation between i.am remote control and the receiver.



**ATTENTION:** if the receiver does not respond, the auto-memorization has not been successful or the receiver is not enabled. In the latter case, it is necessary to insert the new remote controls following the manual procedure (see "Manual receiver procedure").

(\*) This is a trademark of a third party not affiliated nor linked with Silca S.p.A. or the dormakaba Group. Silca S.p.A. and dormakaba Group do not own any intellectual property right nor have been granted any license with regard to such trademark, which is hereby used only to indicate the intended purpose of Silca's products.

## RECEIVER MANUAL MEMORIZATION PROCEDURE



### RECEIVER MANUAL MEMORIZATION

Simplified procedure to activate the i.am remote control in the receiver manually.

Procedure to follow if at the end of the copy, the LED light remains on for a few seconds.

1. Position i.am remote control near the receiver (+/- 30 cm).



**ATTENTION:** each brand and model of receiver has a specific learning mode.

2. Consult the receiver instruction manual or the "Receiver manual memorization" procedure.




**ATTENTION:** if the receiver does not respond, it means that the manual memorization was not successful. Consult the receiver instruction manual or the section "Problem solving" on page 22.

(\*) This is a trademark of a third party not affiliated nor linked with Silca S.p.A. or the dormakaba Group. Silca S.p.A. and dormakaba Group do not own any intellectual property right nor have been granted any license with regard to such trademark, which is hereby used only to indicate the intended purpose of Silca's products.

## SPECIFIC BFT\* MITTO DUPLICATION PROCEDURE


**1 SELECT BUTTONS TO START THE PROCEDURE**



Press button 4 for 4 times

Release the 2 buttons

**2 ACTIVE CODE LEARNING**

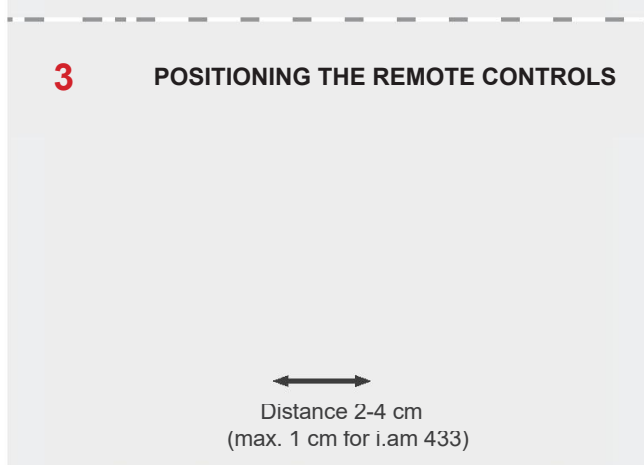


The LED ashes slowly (approximately every 2 seconds)

Button 1

Button 4




**3 POSITIONING THE REMOTE CONTROLS**



Distance 2-4 cm (max. 1 cm for i.am 433)

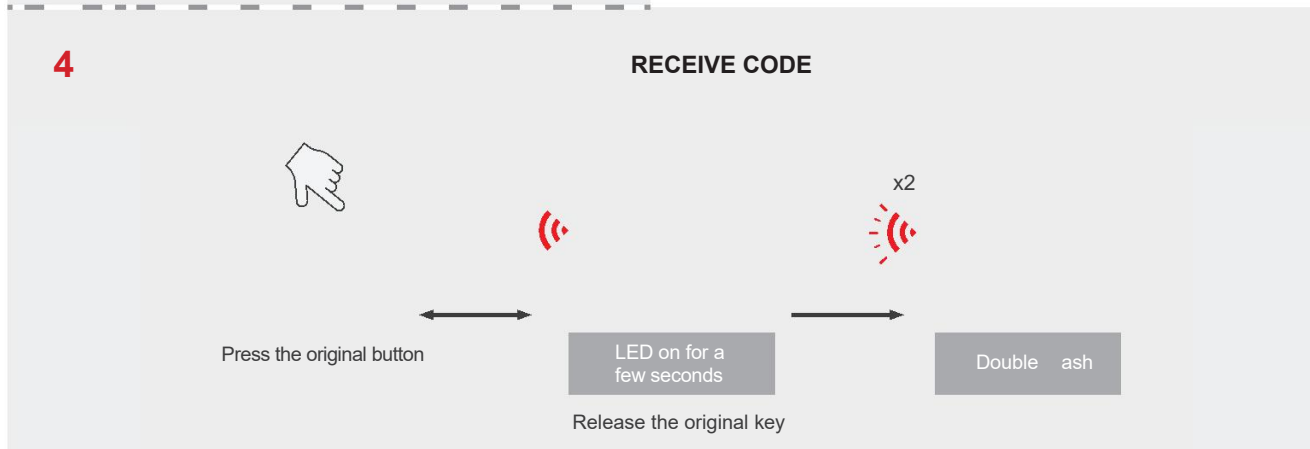
### COMPATIBLE BFT\* MITTO REMOTE CONTROL

Procedure that allows duplication of BFT\* MITTO Rolling-Code models (compatible with i.am remote control BT, 64, 128, 433 models).

1. Hold down button 1 on i.am and press 4 times button 4. Release the 2 buttons.
2. The  LED starts to ash slowly (approximately every 2 seconds).
3. Position the BFT\* remote control in front of i.am at a distance of approximately 2-4 cm (no more than 1 cm for the i.am remote control 433 model).
4. Press the button to be copied from the BFT\* remote control: the  LED on the new i.am remote control will remain permanently lit. Release the button on the original remote control. After releasing the button, the i.am remote control  LED will ash twice (x2).

→ continues

**4 RECEIVE CODE**



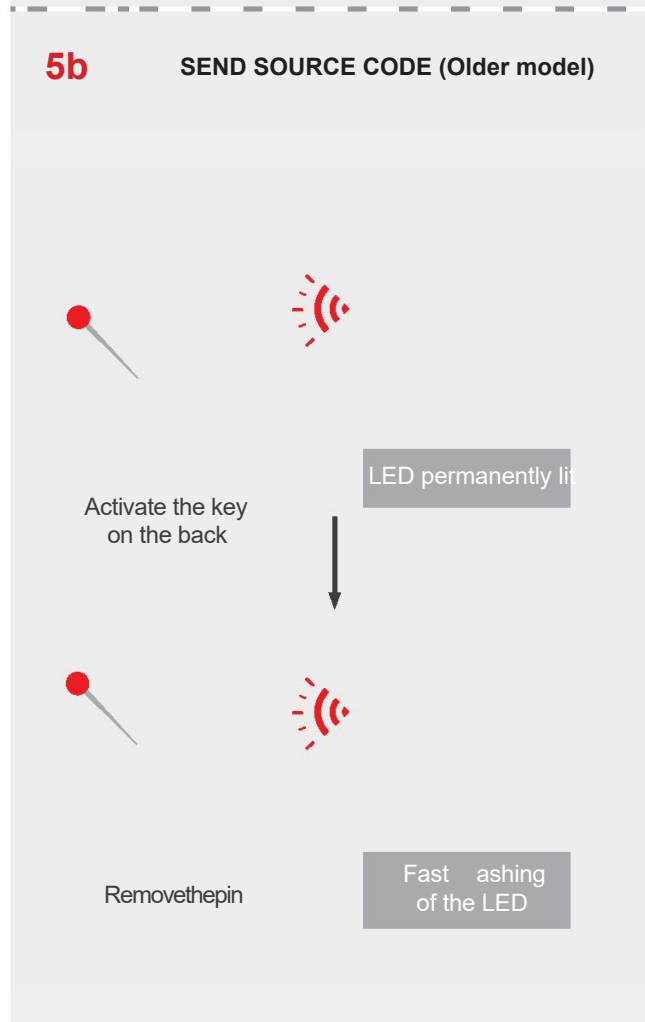
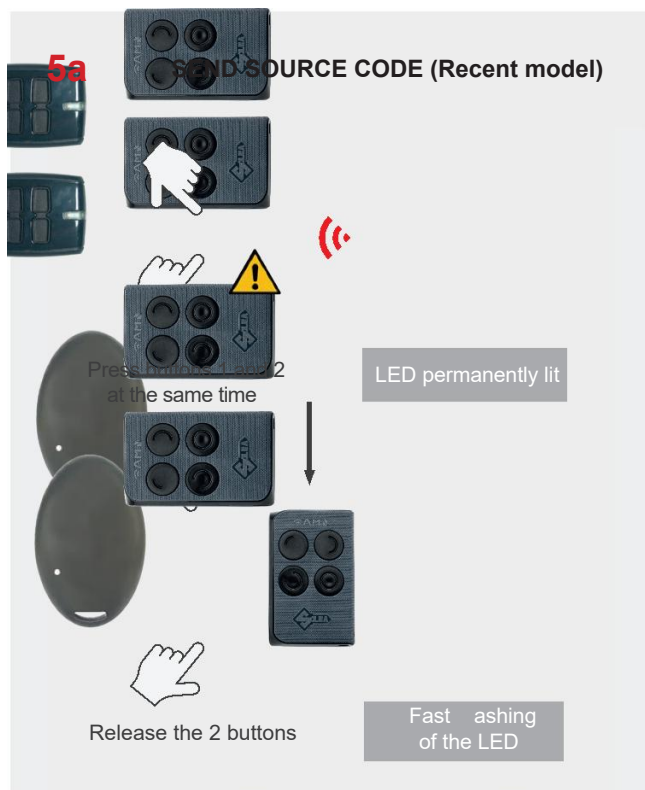
Press the original button

LED on for a few seconds



Release the original key

Double ash

(\*) This is a trademark of a third party not affiliated nor linked with Silca S.p.A. or the dormakaba Group. Silca S.p.A. and dormakaba Group do not own any intellectual property right nor have been granted any license with regard to such trademark, which is hereby used only to indicate the intended purpose of Silca's products.




**5a. Sending a recent BFT\* model source code:**


press and hold down buttons 1 and 2 on the BFT\* remote, the LED  on the new i.am will remain lit. Release the buttons on the original remote only when the LED  on the i.am remote starts flashing quickly.

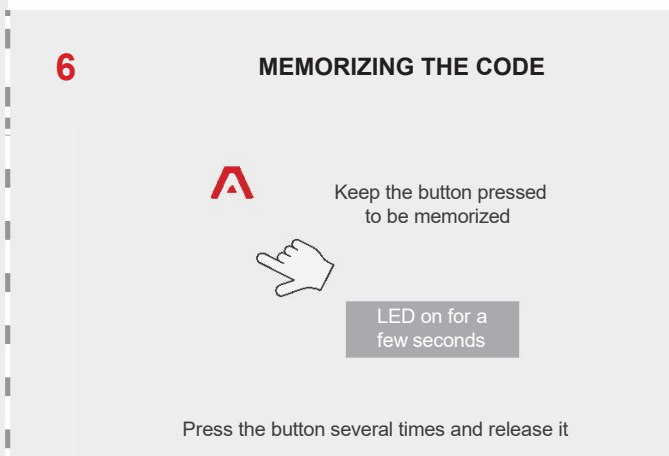
**5b. Sending an oval BFT\* model source code (older):**

send the source code of the BFT\* remote control by pressing the button hidden on the back using a pin until the i.am LED starts flashing quickly, then remove the pin.

If the remote control to be copied is not the original but an i.am remote control that has already been duplicated, use the "Source Code Procedure".

6. Press and hold the button you want to use on i.am remote control LED  will light up for a few seconds. The copy was successful: the i.am remote control button needs to be memorized in the original receiver following the ALS procedure (see the "ALS Procedure").

**ATTENTION:** if the LED  continues to flash slowly, the code learning was not successful. See the section "Problem solving" on page 22.



(\*) This is a trademark of a third party not affiliated nor linked with Silca S.p.A. or the dormakaba Group. Silca S.p.A. and dormakaba Group do not own any intellectual property right nor have been granted any license with regard to such trademark, which is hereby used only to indicate the intended purpose of Silca's products.

## SPECIFIC AVIDSEN\* DUPLICATION PROCEDURE

### AVIDSEN\* COMPATIBLE REMOTE CONTROLS



**M**

**1**

### SELECT BUTTONS TO START THE PROCEDURE



Keep  
button  
1 pressed



Press  
button 4  
for 4 times

Release the 2 buttons

**2**

### CODE LEARNING ACTIVE



The LED flashes  
slowly  
(approximately  
every 2 seconds)







Button 1



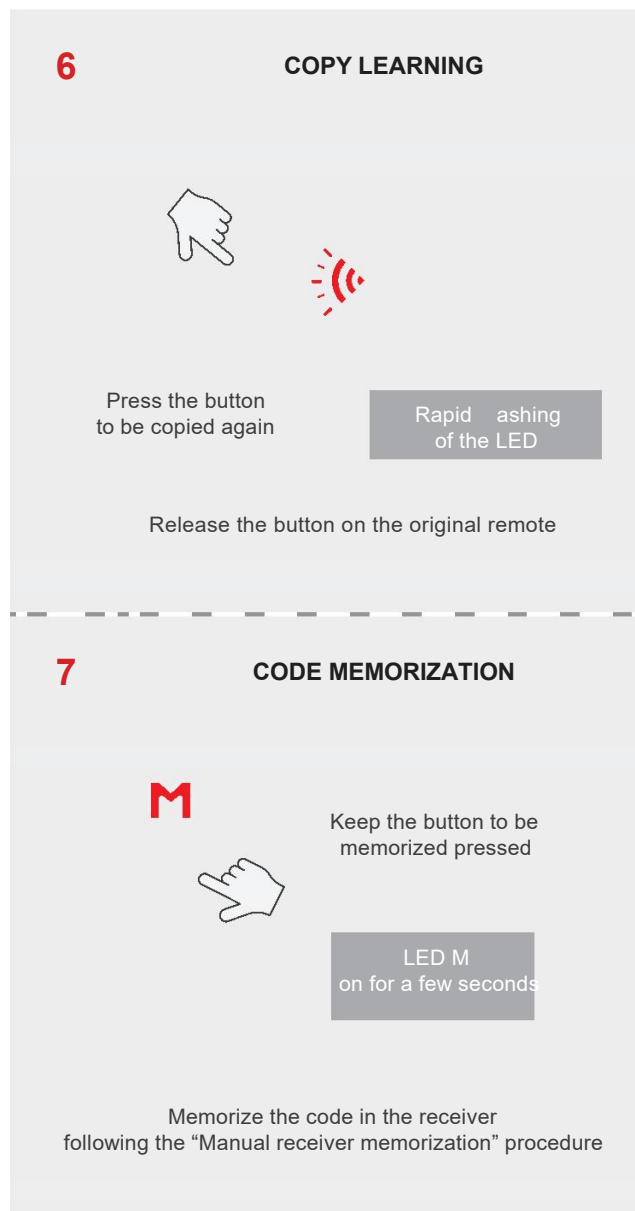
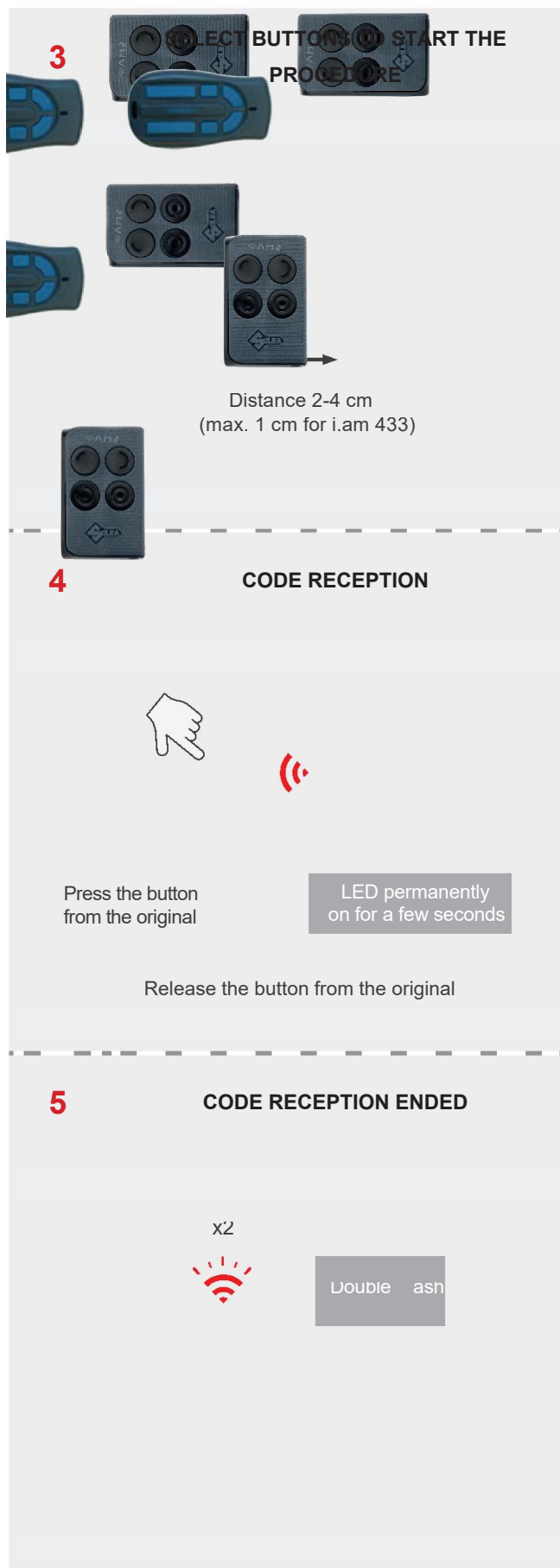
Button 4

Procedure that allows duplication of AVIDSEN\* Rolling-Code models (compatible with i.am remote control BT, 64, 128, 433 models).

1. Hold down button 1 on i.am remote control and press 4 times button 4. Release the 2 buttons.
2. The  LED starts to flash slowly (approximately every 2 seconds).
3. Position the AVIDSEN\* remote control in front of i.am remote control at a distance of approximately 2-4 cm (no more than 1 cm for the i.am 433 model).
4. Press the button to be copied from the AVIDSEN\* remote control: the  LED on the new i.am remote control will remain permanently lit for a few seconds. Release the button.
5. After releasing the button, the i.am remote control LED  will flash twice (x2).
6. Press the AVIDSEN\* button you want to copy again: the i.am remote control LED will start to flash quickly, then release the AVIDSEN\* button.
7. Hold down the button you want to use on i.am remote control, the  LED will light up for a few seconds. The copy was successful: the i.am remote control button needs to be memorized in the original receiver following the "Manual receiver memorization" procedure.

 continues

(\*) This is a trademark of a third party not affiliated nor linked with Silca S.p.A. or the dormakaba Group. Silca S.p.A. and dormakaba Group do not own any intellectual property right nor have been granted any license with regard to such trademark, which is hereby used only to indicate the intended purpose of Silca's products.



If your original remote control has other buttons with functions you want to copy, follow the same procedure (steps 1 to 7) for each button.

(\*) This is a trademark of a third party not affiliated nor linked with Silca S.p.A. or the dormakaba Group. Silca S.p.A. and dormakaba Group do not own any intellectual property right nor have been granted any license with regard to such trademark, which is hereby used only to indicate the intended purpose of Silca's products.

## SPECIFIC V2\* DUPLICATION PROCEDURE



V2\* COMPATIBLE REMOTE CONTROLS



1

### SELECT BUTTONS TO START THE PROCEDURE

Keep  
button  
1 pressed



Press  
button 4  
for 4 times

Release the 2 buttons

2

### CODE LEARNING ACTIVE



The LED flashes  
slowly  
(approximately  
every 2 seconds)







Button 1



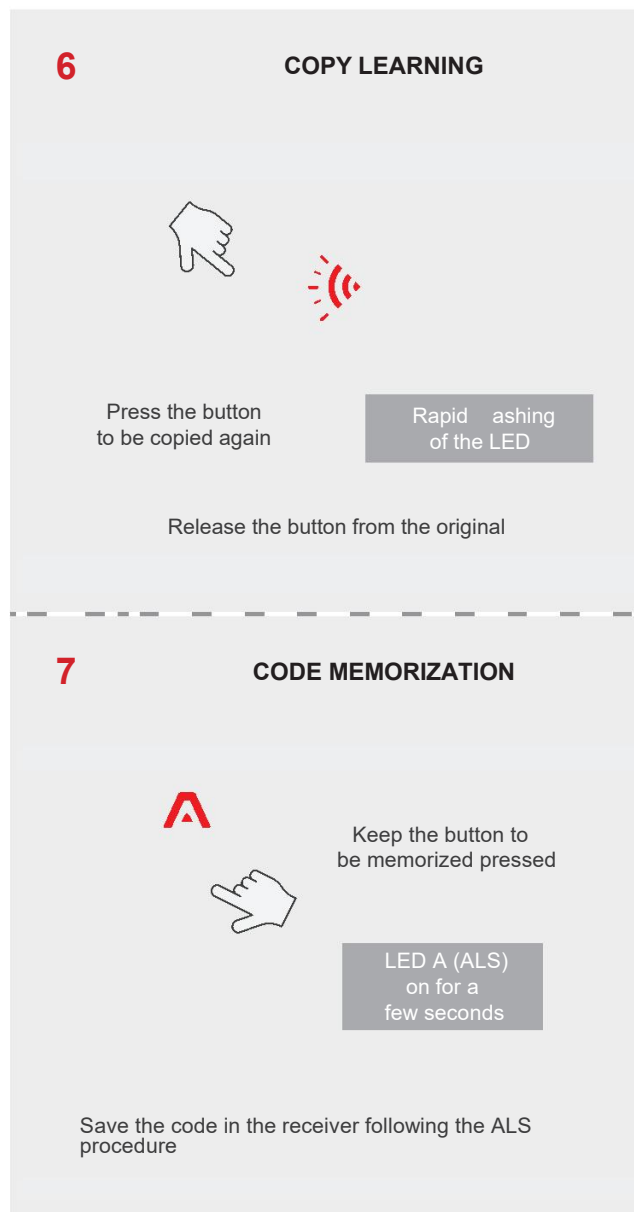
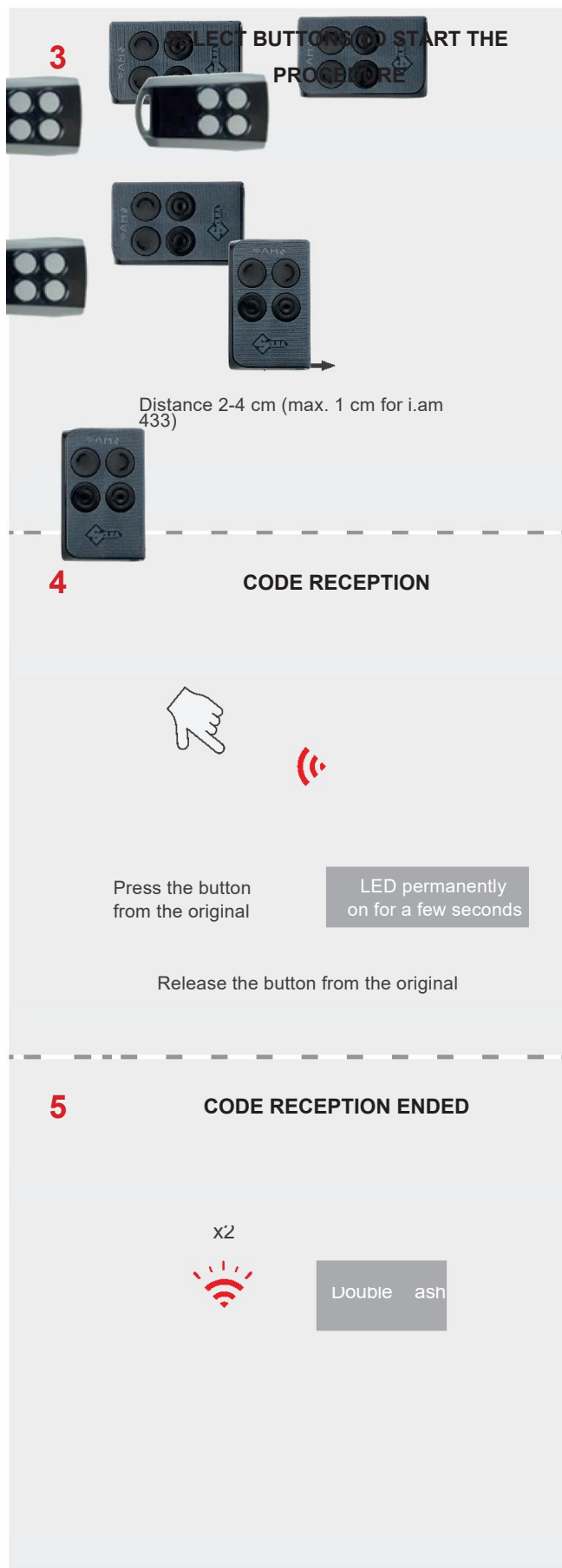
Button 4

Procedure that allows duplication of V2\* Rolling-Code models (compatible with i.am remote control BT, 64, 128, 433 models).

1. Hold down button 1 on i.am remote control and press button 4 for 4 times. Release the 2 buttons.
2. The  LED starts to flash slowly (approximately every 2 seconds).
3. Position the V2\* remote control in front of i.am remote control at a distance of approximately 2-4 cm (no more than 1 cm for the i.am remote control 433 model).
4. Press the button to be copied from the V2\* remote control: the  LED on the new i.am remote control will remain permanently lit for a few seconds. Release the button.
5. After releasing the button, the i.am remote control LED  will flash twice (x2).
6. Press the V2\* button you want to copy again: the i.am remote control LED will start to flash quickly, then release the V2\* button..
7. Hold down the button you want to use on i.am remote control, the  LED will light up for a few seconds. The copy was successful: the i.am remote control button needs to be memorized in the original receiver following the ALS procedure (see "ALS Procedure").

→  
continues

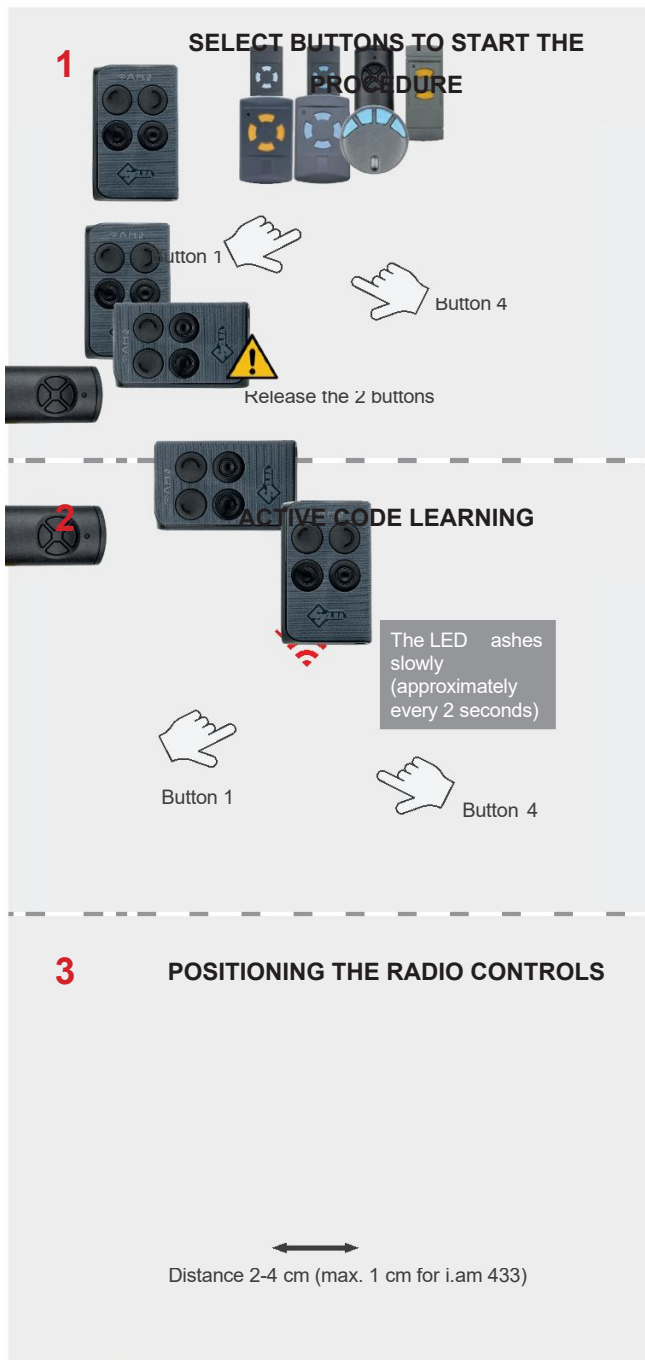
(\*) This is a trademark of a third party not affiliated nor linked with Silca S.p.A. or the dormakaba Group. Silca S.p.A. and dormakaba Group do not own any intellectual property right nor have been granted any license with regard to such trademark, which is hereby used only to indicate the intended purpose of Silca's products.



If your original remote control has other buttons with functions you want to copy, follow the same procedure (steps 1 to 7) for each button.

(\*) This is a trademark of a third party not affiliated nor linked with Silca S.p.A. or the dormakaba Group. Silca S.p.A. and dormakaba Group do not own any intellectual property right nor have been granted any license with regard to such trademark, which is hereby used only to indicate the intended purpose of Silca's products.

## SPECIFIC HÖRMANN\* DUPLICATION PROCEDURE



### COMPATIBLE HÖRMANN\* REMOTE CONTROLS

Procedure that allows duplication of HÖRMANN\* models with Rolling code (compatible with i.am remote control 64 models).

1. Hold down button 1 on i.am remote control and press button 4 for 4 times. Release the 2 buttons.
2. The LED starts to flash slowly (approximately every 2 seconds).
3. Position the HÖRMANN\* remote control in front of i.am remote control at a distance of approximately 2-4 cm (max. 1 cm for the i.am remote control 433 model).
4. Press the button to be copied from the HÖRMANN\* remote control: the blue LED lights up for approximately 3 seconds, goes off and the starts to flash blue and red. Continue to flash rapidly, then release the button.

**ATTENTION:** if at first the red LED lights up, you need to change the battery on the original remote control.

5. Press and hold the button you want to use on i.am remote control, the LED will light up for a few seconds. The copy was successful: check that i.am remote control is working correctly at the receiver.

If your original remote control has other buttons with functions you want to copy, follow the same procedure (steps 1 to 5) for each button.

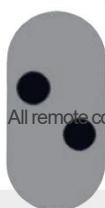


(\*) This is a trademark of a third party not affiliated nor linked with Silca S.p.A. or the dormakaba Group. Silca S.p.A. and dormakaba Group do not own any intellectual property right nor have been granted any license with regard to such trademark, which is hereby used only to indicate the intended purpose of Silca's products.

## SPECIFIC CAME\* TOPDXF/R DUPLICATION PROCEDURE



COMPATIBLE CAME\* TOPDXF/R REMOTE CONTROLS



All remote controls in the range can also be found with grey buttons

1

### CHECK CAME\* REMOTE CONTROL FREQUENCY



Button 1



Button 2

The white LED ashes slowly.  
After 4 seconds it ashes rapidly

Procedure that allows duplication of CAME\* Rolling code models from the "TOPDXF/R" range (compatible with i.am remote control BT, 64, 128, 433 models). CAME\* remote controls transmit at dual frequencies (433.952 and 868.35 MHz) alternately. Before copying, check the receiver frequency and set the CAME\* frequency to the same frequency as the receiver(1).

1. Hold down button 1 and 2 on the CAME\*: the white LED starts to ash slowly and after 4 seconds rapidly.
2. Check the status of the white LED on the CAME\* remote:
  - LED OFF: means that the original remote control is set to transmit at 868.35 MHz.
  - LED FLASHING: means that the original remote control is set to transmit at dual frequency.
  - LED ON: means that the original remote control is set to transmit at 433.92 Mhz.

2

### CHECK CAME\* REMOTE CONTROL FREQUENCY

LED OFF: transmission at 868.35 Mhz

LED FLASHING: dual frequency transmission

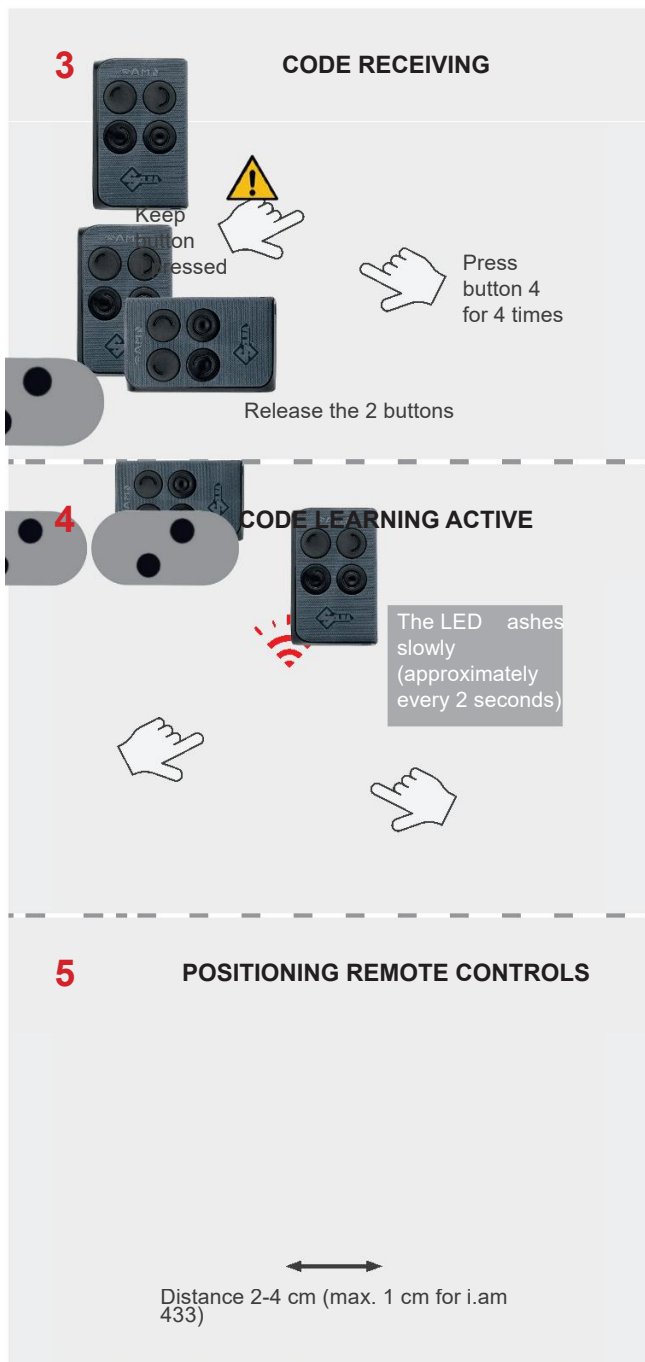
LED ON: transmission at 433.92 Mhz



Repeat the operations until the CAME\* is set to the frequency of the receiver checked previously.


→ continues


(1) If it is not possible to verify the receiver frequency, it is recommended to make a copy in 433 mode on one i.am remote control button and a copy in 868 mode on a second button. You should inform the customer that only one of the two buttons will function correctly.

(\*) This is a trademark of a third party not affiliated nor linked with Silca S.p.A. or the dormakaba Group. Silca S.p.A. and dormakaba Group do not own any intellectual property right nor have been granted any license with regard to such trademark, which is hereby used only to indicate the intended purpose of Silca's products.



3. Hold down button 1 of i.am remote control and press button 4 for 4 times. Release the 2 buttons.
4. The  LED starts to flash slowly (approximately every 2 seconds).
5. Position the CAME\* remote in front of i.am remote control at a distance of approximately 2-4 cm (no more than 1 cm for the i.am remote control 433 model).
6. Press the button to be copied from the original remote control: the  LED on i.am remote control starts to flash quickly. Release the button on the original radio control.

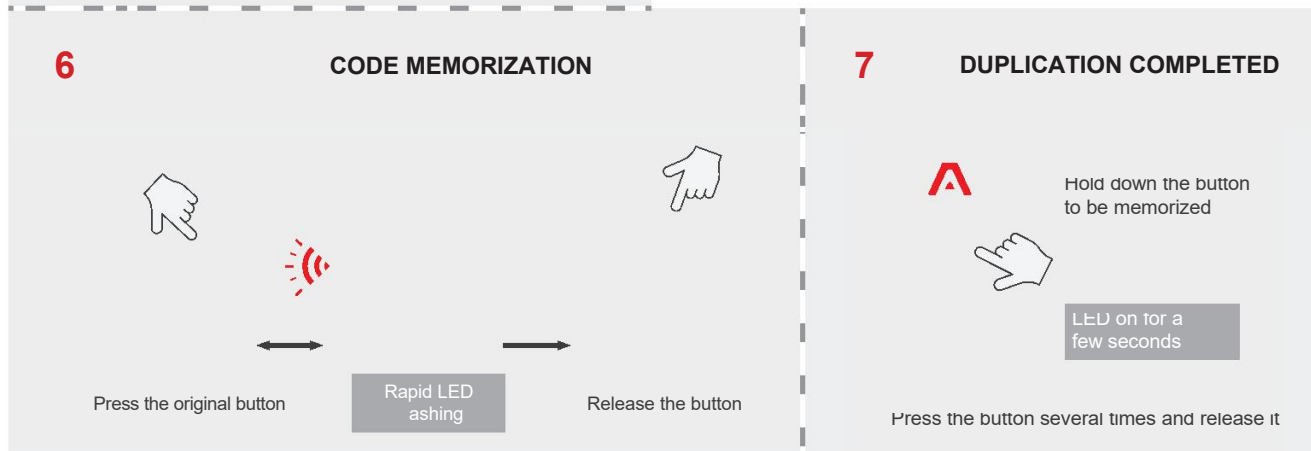
**ATTENTION:** Warning: if in step 4 the  LED continues to flash slowly, the code learning was not successful. Consult the section "Problem solving" on page 22

7. Hold down the button you wish to use on i.am remote control, LED A  (ALS) will light up for a few seconds. The copy was successful: the i.am remote control button needs to be memorised in the original receiver following the ALS procedure (see the document "ALS Procedure").

If your original remote control has other buttons with functions you wish to copy, follow the same procedure (steps 1 to 7) for each button.

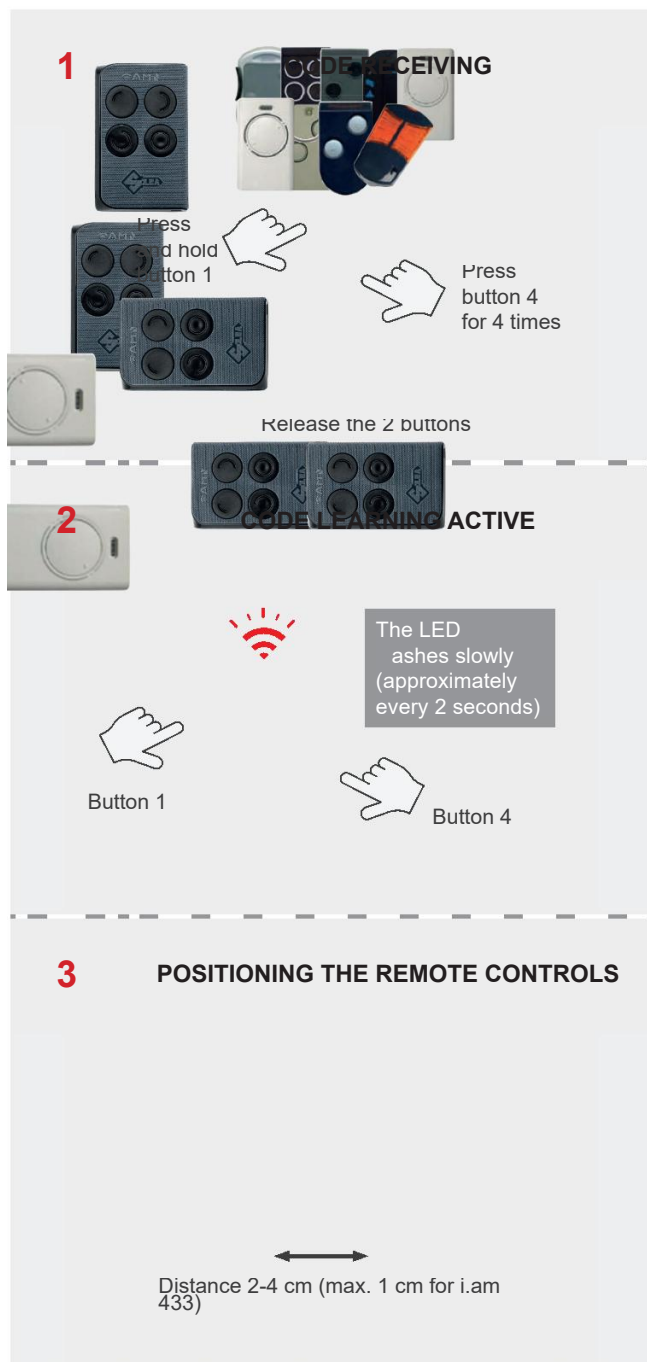
Once the copying procedure is complete, it is advisable to return the CAME\* remote control to the original transmission mode by repeating the operations described above (phase 1 and 2).

(1) If it is not possible to verify the receiver frequency, it is recommended to make a copy in 433 mode on one i.am remote control button and a copy in 868 mode on a second button. You should inform the customer that only one of the two buttons will function correctly.






(\*) This is a trademark of a third party not affiliated nor linked with Silca S.p.A. or the dormakaba Group. Silca S.p.A. and dormakaba Group do not own any intellectual property right nor have been granted any license with regard to such trademark, which is hereby used only to indicate the intended purpose of Silca's products.

## SPECIFIC DUPLICATION PROCEDURE FAAC\*/GENIUS\* MASTER

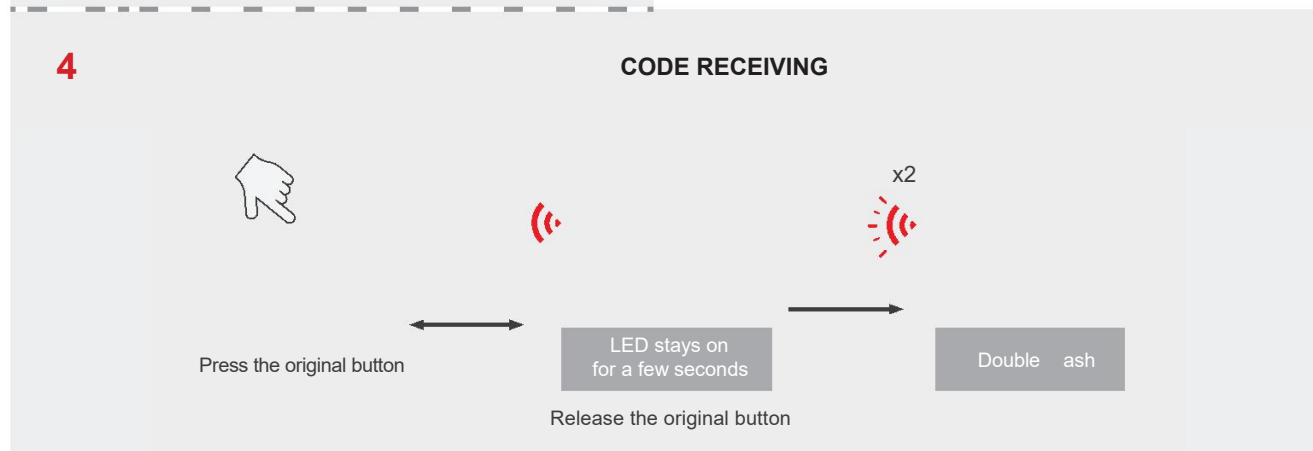


### FAAC\*/GENIUS\* MASTER REMOTE CONTROLS

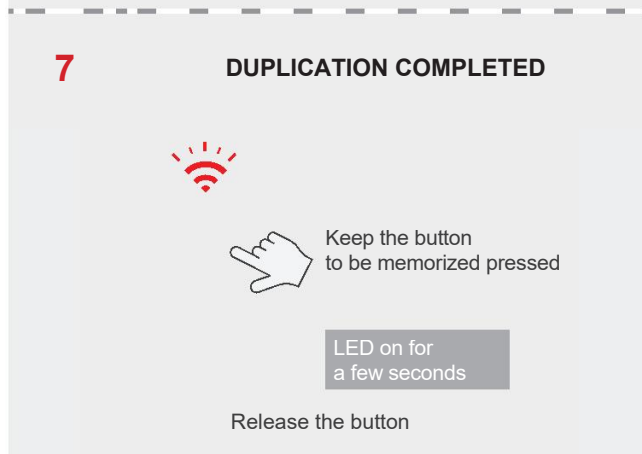
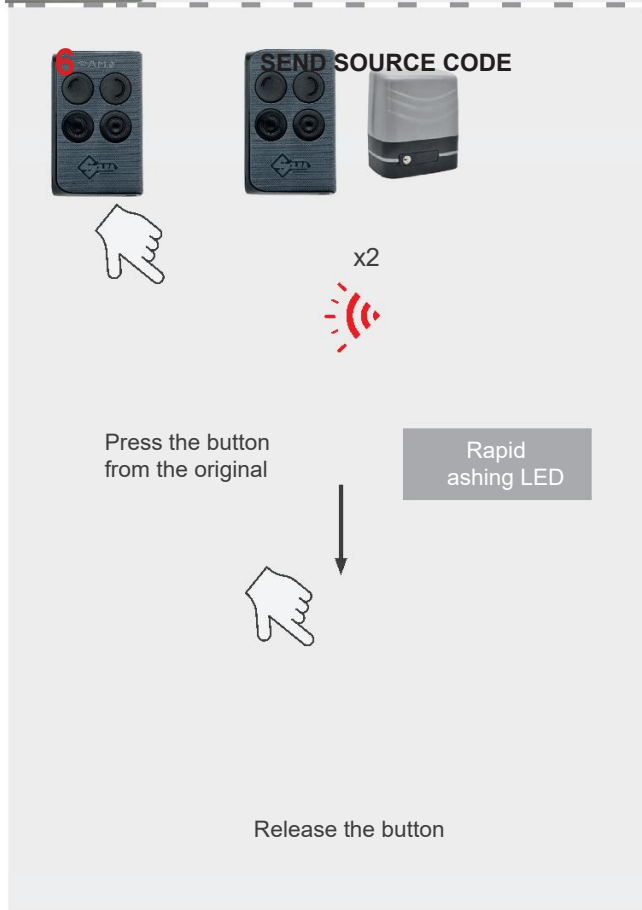
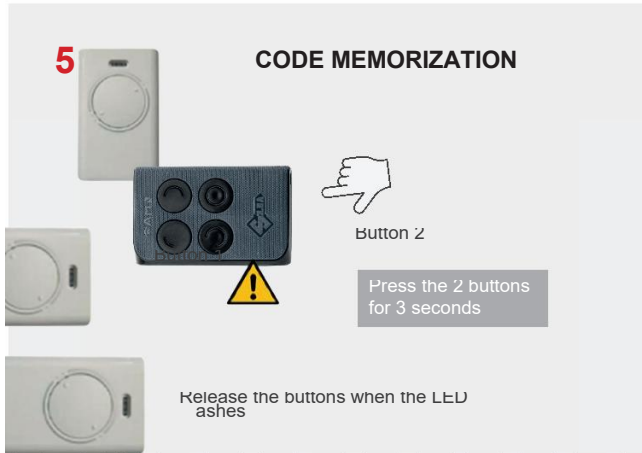
The procedure must be performed only if the original remote control is a Master. When any button is pressed, the LED must emit a double flash and not remain on (compatible with i.am remote control BT, 64, 128, 433 models).



1. Hold down button 1 of i.am remote control and press button 4 for 4 times. Release the 2 buttons.
2. The  LED starts to ash slowly (approximately every 2 seconds).
3. Position the FAAC\*/GENIUS\* Master remote control in front of i.am remote control at a distance of approximately 2-4 cm (no more than 1 cm for the i.am remote control 433 model).
4. Press the button to be copied from the FAAC\*/GENIUS\* Master remote control: the  LED on the new i.am remote control will remain permanently lit and release the button on the original remote control. After releasing the button, the  LED on i.am remote control will ash twice (x2).

→ continues



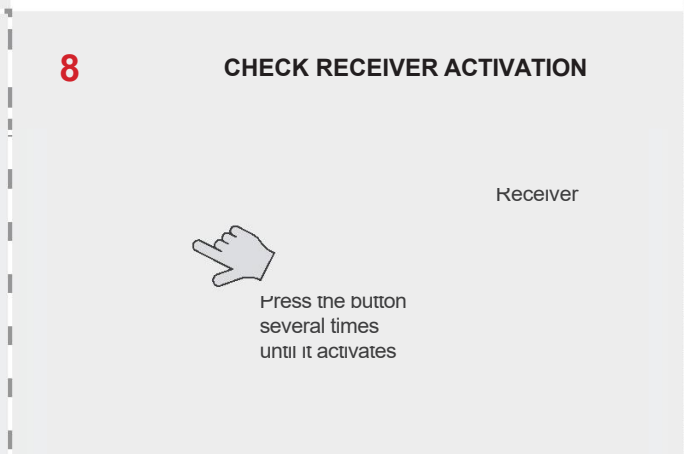
(\*) This is a trademark of a third party not affiliated nor linked with Silca S.p.A. or the dormakaba Group. Silca S.p.A. and dormakaba Group do not own any intellectual property right nor have been granted any license with regard to such trademark, which is hereby used only to indicate the intended purpose of Silca's products.



5. Move the 2 remote controls apart and hold down buttons 1 and 2 on the FAAC\*/GENIUS\* Master at the same time for 3 seconds. Release them when the LED starts to flash.
6. Reposition the FAAC\*/GENIUS\* Master remote control in front of i.am remote control . Send the source code of the original remote control to i.am remote control by holding down the same button pressed previously (see point 4) until the i.am remote control LED  starts to flash rapidly. Release the button.
7. Press and hold the button you want to use on i.am remote control , the LED  will light up for a few seconds. The copy was successful. Release the button.
8. Check that i.am remote control is working correctly by approaching the receiver and pressing the i.am remote control button several times until it activates.

If your original remote control has other buttons with functions that you want to copy, follow the same procedure (steps 1 to 8 for each button).

**ATTENTION:** if the LED  continues to flash slowly, the code learning has not been successful. See the section "Problem solving" on page 22.





(\*) This is a trademark of a third party not affiliated nor linked with Silca S.p.A. or the dormakaba Group. Silca S.p.A. and dormakaba Group do not own any intellectual property right nor have been granted any license with regard to such trademark, which is hereby used only to indicate the intended purpose of Silca's products.

## SOURCE CODE PROCEDURE



Procedure that allows you to send the source code from an i.am remote control with a BFT\*, FAAC\* and GENIUS\* code stored (compatible with i.am remote control BT, 64, 128, 433 models).

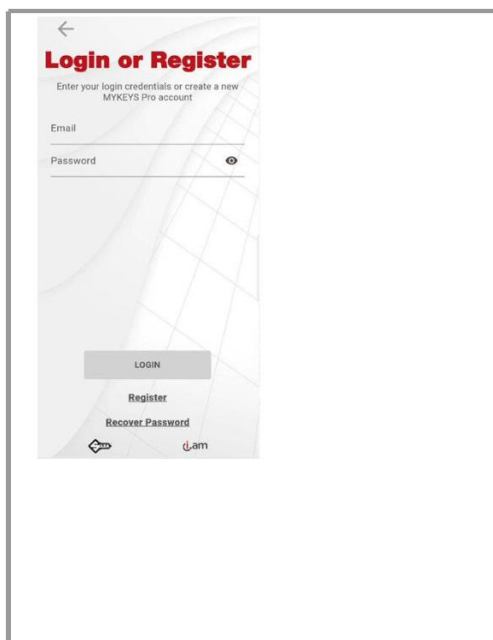
1. Press and hold buttons 1 and 2 on the i.am remote control for 5 seconds.
2. When the  LED starts to flash rapidly, release the buttons.
3. Press and hold the i.am remote control button to which you want to send the source code and then release the button.
4. The  LED remains on for approximately 6 seconds.

(\*) This is a trademark of a third party not affiliated nor linked with Silca S.p.A. or the dormakaba Group. Silca S.p.A. and dormakaba Group do not own any intellectual property right nor have been granted any license with regard to such trademark, which is hereby used only to indicate the intended purpose of Silca's products.





## I.AM BT AND APP I.AM PRO

Follow the technical specifications below for the i.am remote control BT model to function correctly:

1. Download the i.am remote control PRO APP for IOS version higher than 7.00 and for ANDROID version higher than 12.00.
2. Activate Bluetooth on your smartphone.
3. Accept the permissions to allow i.am remote control PRO to find Bluetooth devices.
4. Activate geolocation.
5. Follow the procedure to access MYK PRO or register if you don't have an account.



## PROBLEM SOLVING

1. **During copying, the  LED keeps flashing slowly: the code has not been successfully learnt**
  - a) Check if the original remote control is compatible: it must be present in the list of applications.
  - b) Replace the battery of the original remote control and repeat the procedure.
  - c) Place the two remote controls opposite each other and repeat the procedure.
  - d) The electronic board could be faulty: contact customer service.
2. **Once the copy is finished, the i.am remote control  LED turns on but it doesn't work immediately with the original receiver**
  - a) Check if the original remote control is compatible: it must be present in the list of applications.
  - b) Make sure you have copied to i.am a button of a remote control already memorised in the original receiver.
  - c) Try to memorise the i.am remote control directly in the receiver as described in the paragraph 'Receiver Manual Memorisation Procedure'
3. **The ALS Procedure was not successful:**
  - a) After copying, check that the  i.am remote control LED has turned on.
  - b) Make sure you have copied to i.am a button of a remote control already memorised in the original receiver.
  - c) Check that the original receiver is enabled for remote memorisation (see the receiver instruction manual).
  - d) Try to memorise the i.am by acting directly on the receiver as described in the paragraph 'Receiver Manual Memorisation Procedure'.
4. **When copying is complete, the  i.am remote control LED is on but it has not been memorised manually in the receiver:**
  - a) Check that the original remote control is compatible: it must be present in the list of applications.
  - b) Make sure that the remote control you copied into the i.am is compatible with the original receiver.
5. **The 'Receiver Manual Memorisation Procedure' was not successful:**
  - a) Check if the original remote control is compatible: it must be present in the list of applications.
  - b) Make sure that the remote control you copied into the i.am is compatible with the original receiver.
6. **i.am remote control BT does not connect to the smartphone:**
  - a) Check that the Silca remote control has a battery.
  - b) Make sure that the Bluetooth® connection on your smartphone is active and that the two devices are close to each other.
  - c) Close the i.am PRO APP and try again.
  - d) The electronic board may be faulty: contact customer service.
7. **READING ERROR when copying i.am remote control BT with the APP:**
  - a) The original remote control used has not been recognised, please try again.
  - b) The original remote control is not compatible with i.am BT: check if it is present in the list of applications.
8. **SERVER error when copying an i.am remote control BT with the APP:**
  - a) The SERVER could not be reached: make sure you have an active internet connection.
  - b) SERVER malfunction: contact customer service.

**9. How do I update an i.am remote control BT?**

- a) The APP will prompt you to update the remote control through a step-by-step guided procedure.

**10. What happens if the update is interrupted halfway through?**

- a) In this case, both the LED  and the LED  remain on. Proceed as described in point 11.

**11. Recovery procedure for i.am remote control BT update with the APP:**

- a) Remove and then replace the battery.
- b) Open the APP and click on the LET'S GO icon: wait 15 seconds until the message 'No i.am BT remote control found!' appears and click on 'Recovery in progress. Do not interrupt the process'.

**12. The i.am remote control has a short range:**

- a) Check that the automation antenna is on the same frequency as the copied i.am remote control.

**13. Battery level: if it starts flashing:**

- a) If the battery level starts flashing, the remote control can operate for up to about 200 activations, then it will stop working.

**14. Is the i.am BT remote control compatible with the Easy Scan Plus/Remote Programming software?**

- a) No, the i.am BT remote control only works with the dedicated APP.

## DISPOSAL

For correct disposal please refer to current standards

### INFORMATION FOR USERS OF PROFESSIONAL EQUIPMENT



From “Actuation of Directive 2012/19/EU regarding Waste Electrical and Electronic Equipment (WEEE)”

The symbol of a crossed waste bin found on equipment or its packing indicates that at the end of the product’s useful life it must be collected separately from other waste so that it can be properly treated and recycled.

In particular, separate collection of this professional equipment when no longer in use is organised and managed:

- a) directly by the user when the equipment was placed on the market before 31 December 2010 and the user personally decides to eliminate it without replacing it with new equivalent equipment designed for the same use;
- b) by the manufacturer, that is to say the subject which was the first to introduce and market new equipment that replaces previous equipment, when the user decides to eliminate equipment placed on the market before 31 December 2010 at the end of its useful life and replace it with an equivalent product designed for the same use. In this latter case the user may ask the manufacturer to collect the existing equipment;
- c) by the manufacturer, that is to say the subject which was the first to introduce and market new equipment that replaces previous equipment, if the equipment was placed on the market after 31 December 2010;

With reference to portable batteries/accumulators, when such products are no longer in use the user shall take them to suitable authorised waste treatment facilities.

Suitable separate collection for the purpose of forwarding discarded equipment and batteries/accumulators for recycling, treatment or disposal in an environmentally friendly way helps to avoid possible negative effects on the environment and human health and encourages re-use and/or recycling of the materials making up the equipment.

To remove batteries/accumulators, consult the manufacturer’s specific instructions: (see relevant chapter in the users’ manual).

The sanctions currently provided for by law shall apply to users who dispose of equipment, batteries and accumulators in unauthorised ways.